



BEVERAGE-AIR®

| | |
|-----------------|------------|
| Project: _____ | AIA# _____ |
| Item: _____ | |
| Location: _____ | SIS# _____ |
| Approved: _____ | |

BAR EQUIPMENT- BACK BAR REFRIGERATOR

BB94HC Solid Door Food Rated
Hydrocarbon Series

MODEL:
BB94HC-1-F-B

BB94HC BACK BAR REFRIGERATOR: FOOD RATED



5 Year Parts/Labor Warranty Available

7 Year Compressor Warranty

CABINET CONSTRUCTION

- Exterior features durable black painted steel
- Stainless steel interior
- Full electronic control
- 1 ½" Stainless steel top
- Six (6) epoxy coated shelves
- Self-closing doors with 120° stay-open feature
- Field reversible doors (hinge kit not included)
- Door locks
- Magnetic door gaskets provide positive door sealing
- LED lighting
- Certified for open food product
- Compressor available on left or right, specify at time of unit order
- Balanced, forced air refrigeration system provides rapid chilling of product

OPTIONS & ACCESSORIES

- 3 Year parts/labor standard, additional 2 year warranty available
- Wine model (40°-60° models)
- Galvanized sub-top
- Wire shelf divider
- Additional shelves
- Additional shelf clips
- 3" or 6" Casters
- 6" Black legs
- Remote option* (see note on back on page)

REFRIGERATION SYSTEM

- Uses environmentally friendly, energy efficient R290 refrigerant, and meets all regulatory requirements for CARB, SNAP, DOE & more
- Adaptive defrost
- Epoxy coated evaporator coil
- Maintains product temperature between 36°F and 38°F



Please verify qualifying units by visiting:
www.energystar.gov/cfs

3779 Champion Blvd., Winston-Salem, NC 27105
1-888-845-9800 Fax: 1-336-245-6453
Beverage-Air.com Sales@bevair.com



BEVERAGE-AIR

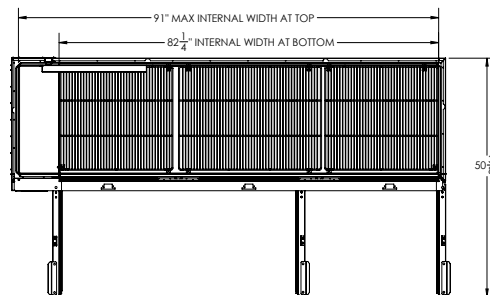
| MODEL | BB94HC-1-F-B |
|----------------------------------|--------------|
| EXTERNAL DIMENSIONAL DATA | |
| Width Overall (in) | 95" |
| Depth Overall (in) | 29 1/8" |
| Height Overall (in) | 37 1/4" |
| Number of Doors | 3 |
| Depth with Door Open 90° (in) | 50 3/8" |
| Door Openings (in) | 21" x 30" |
| INTERNAL DIMENSIONAL DATA | |
| NET Capacity (cubic ft.) | 37.82 |
| Internal Width Useable (in) | 82 1/4" |
| Internal Depth Overall (in) | 23" |
| Internal Height Overall (in) | 32" |
| Number of Shelves | 6 |
| Number of 1/2 Kegs | 5 |
| ELECTRICAL DATA | |
| Full Load Amperes | 5.5 |
| REFRIGERATION DATA | |
| Horsepower | 1/3 |
| Capacity (BTU/Hr) | 2392 |
| Heat Rejection (BTU/Hr) | 3588 |
| Charge (lbs/grams) | 0.2535/115 |
| SHIPPING DATA | |
| Gross Weight - Crated | 510 lbs |
| Height - Crated | 45" |
| Width - Crated | 97" |
| Depth - Crated | 32" |

*NOTE: Remote units are field wired and come with 6" legs.
Refrigerant must be specified at time of order.

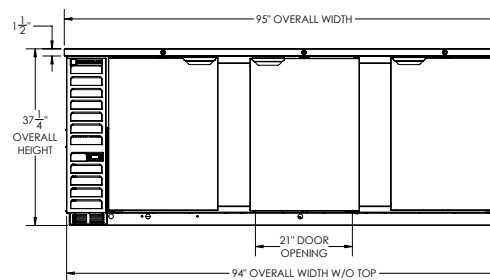
Bar Equipment-Back Bar Refrigerator

Model: BB94HC-1-F-B

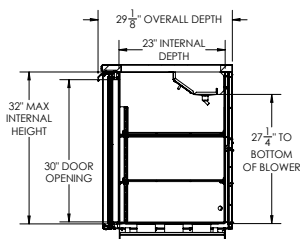
Model Views



PLAN VIEW



ELEVATION VIEW



SIDE VIEW



ELECTRICAL CONNECTION

115/60/1
NEMA 5-15P

Unit pre-wired at factory
and include 8' long cord
and plug set.

3779 Champion Blvd., Winston-Salem, NC 27105 1-888-845-9800 Fax: 1-336-245-6453 Beverage-Air.com Sales@bevoir.com

an Ali Group Company



The Spirit of Excellence