



# BEVERAGE-AIR

|                 |            |
|-----------------|------------|
| Project: _____  | AIA# _____ |
| Item: _____     |            |
| Location: _____ | SIS# _____ |
| Approved: _____ |            |

## MARKETMAX REFRIGERATOR

MMR27HC White Hinged Single Glass Door  
Hydrocarbon Series

MODEL:  
MMR27HC-1-W

MMR27HC GLASS DOOR MERCHANDISER SERIES



**5 Year Parts/Labor Warranty Available**  
**7 Year Compressor Warranty**

### CABINET CONSTRUCTION

- Exterior features durable white painted steel
- Heavy-duty interior construction includes white coated steel walls
- Modern one-piece grille
- Full electronic control
- Refrigerators have double pane lowE argon filled glass door
- Self-closing door with 120° stay-open feature
- Snap-in gaskets, easy to remove for cleaning or replacement
- Field reversible door (hinge kit not included)
- LED lighting
- Brightly lit sign panel
- Five (5) heavy-duty epoxy coated wire shelves
- Four (4) shelf clips included per shelf
- Self-contained bottom mount refrigeration system
- Leveling feet standard

### OPTIONS & ACCESSORIES

- 3 Year parts/labor standard, additional 2 year warranty available
- Stainless steel or black exterior
- Stainless steel or black interior
- Wine models available
- Shelves black or white
- Shelf clips
- Flow track
- Gravity-Flo track
- Price tag molding
- Electronic lock models (swing doors only)
- 3" or 6" Casters
- 6" Legs or seismic/flanged legs
- Door lock
- Custom signage & decals
- Remote option\* (see note on back on page)

### REFRIGERATION SYSTEM

- Uses environmentally friendly, energy efficient R290, and meets all regulatory requirements for CARB, SNAP, DOE & more
- Non-electric defrost with hot gas condensate evaporation
- Epoxy coated evaporator coil
- Maintains product temperatures between 36° - 38°F



Please verify qualifying units by visiting:  
[www.energystar.gov/cfs](http://www.energystar.gov/cfs)

3779 Champion Blvd., Winston-Salem, NC 27105  
1-888-845-9800 Fax: 1-336-245-6453  
Beverage-Air.com Sales@bevair.com



# BEVERAGE-AIR

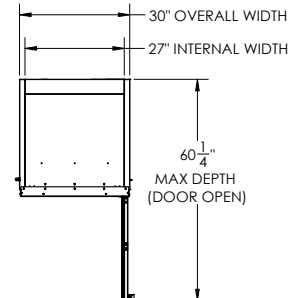
| MODEL                            | MMR27HC-1-W        |
|----------------------------------|--------------------|
| <b>EXTERNAL DIMENSIONAL DATA</b> |                    |
| Width Overall                    | 30"                |
| Depth Overall with Handle        | 33 1/2"            |
| Height Overall                   | 78 1/8"            |
| Number of Doors                  | 1                  |
| Depth with Door Open 90°         | 60 1/4"            |
| Door Opening (in)                | 26 7/8" x 52 3/4"  |
| <b>INTERNAL DIMENSIONAL DATA</b> |                    |
| NET Capacity (cubic ft.)         | 25.97              |
| Internal Width Overall (in)      | 27"                |
| Internal Depth Overall (in)      | 28 1/2"            |
| Internal Height Overall (in)     | 61 3/4"            |
| Internal Height Useable (in)     | 55"                |
| Number of Shelves                | 5                  |
| <b>ELECTRICAL DATA</b>           |                    |
| Full Load Amperes 115/60/1       | 2.88               |
| <b>REFRIGERATION DATA</b>        |                    |
| Horsepower                       | 1/4                |
| Capacity (BTU/Hr)                | 1702               |
| Heat Rejection (BTU/Hr)          | 2553               |
| Charge (lbs/grams/ounces)        | 0.1985 / 90 / 3.18 |
| <b>SHIPPING DATA</b>             |                    |
| Gross Weight - Crated            | 390 lbs            |
| Height - Crated                  | 85"                |
| Width - Crated                   | 32"                |
| Depth - Crated                   | 35"                |

\*NOTE: Remote units are field wired and come with 6" legs.  
Refrigerant must be specified at time of order.

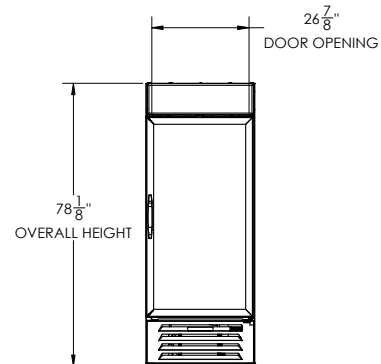
## Glass Door Merchandiser- Hinged Door Model: MMR27HC-1-W

### Model Views

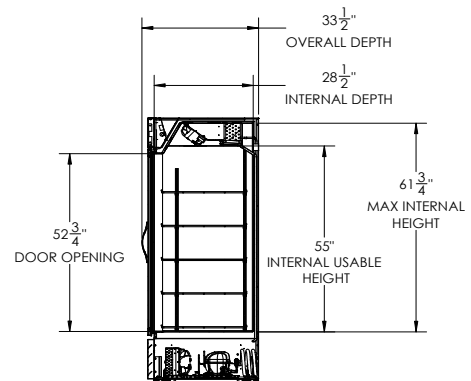
Required Clearance: Rear 3"



### PLAN VIEW



### ELEVATION VIEW



### SIDE VIEW

### ELECTRICAL CONNECTION



115/60/1  
NEMA 5-15P

Unit pre-wired at  
factory and include  
8' long cord and  
plug set.



3779 Champion Blvd., Winston-Salem, NC 27105 1-888-845-9800 Fax: 1-336-245-6453 Beverage-Air.com Sales@bevaair.com

an Ali Group Company

