



# BEVERAGE-AIR

Project: \_\_\_\_\_  
Item: \_\_\_\_\_  
Location: \_\_\_\_\_  
Approved: \_\_\_\_\_

AIA#

SIS#

## WORKTOP REFRIGERATOR

### WTR27AHC Solid Door Refrigerator

### Hydrocarbon Series

MODEL:  
WTR27AHC

WTR27AHC WORKTOP REFRIGERATOR



\*Note: Shown with optional full electronic control

**5 Year Parts/Labor Warranty Available**  
**7 Year Compressor Warranty**

### CABINET CONSTRUCTION

- Stainless steel front, sides, door and grille (galvanized back & bottom)
- Interior liner is made of corrosion resistant aluminum
- Stainless steel top for added durability
- 4" Removable backsplash for flexibility and ease of cleaning
- Mechanical control
- Interior thermometer is standard
- Self-closing door with 120° stay-open feature, on cartridge style hinges
- Magnetic gasket attached to each door for positive seal
- 6" Casters, two (2) with brakes standard
- Two (2) epoxy-coated steel wire shelves
- Field-reversible door (hinge kit not included)

### OPTIONS & ACCESSORIES

- 3 Year parts/labor standard, additional 2 year warranty available
- Stainless steel back
- Stainless steel interior
- 16 Gauge stainless steel top
- Full electronic control\*
- Additional shelves
- Shelf clips
- Glass door option
- Right or left hinged door
- Locks (solid doors only)
- Wire shelf divider
- Cutting board
- 3" Casters
- 6" Legs (stainless steel, black or seismic/flange)
- Low profile casters
- Roller kit
- Remote option\*\* (see note on back on page)

### REFRIGERATION SYSTEM

- Uses environmentally friendly, energy efficient R290 refrigerant, and meets all regulatory requirements for CARB, SNAP, DOE & more
- Adaptive defrost
- Epoxy coated evaporator coil
- Refrigerators capable of maintaining product temperature between 36°F and 38°F



Please verify qualifying units by visiting:  
[www.energystar.gov/cfs](http://www.energystar.gov/cfs)

3779 Champion Blvd., Winston-Salem, NC 27105  
1-888-845-9800 Fax: 1-336-245-6453  
Beverage-Air.com Sales@bevair.com



# BEVERAGE-AIR

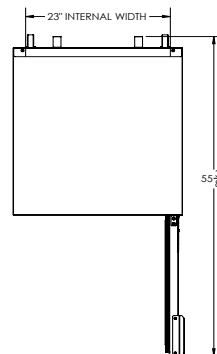
| MODEL                              | WTR27AHC           |
|------------------------------------|--------------------|
| <b>EXTERNAL DIMENSIONAL DATA</b>   |                    |
| Width Overall                      | 27"                |
| Depth Overall with Handle & Bumper | 32 1/8"            |
| Height Overall with 6" Casters     | 39 5/8"            |
| Number of Doors                    | 1                  |
| Depth with Door Open 90°           | 55 3/8"            |
| Door Opening                       | 22 5/8" x 21 5/8"  |
| <b>INTERNAL DIMENSIONAL DATA</b>   |                    |
| NET Capacity (cubic ft.)           | 6.13               |
| Internal Width Overall (in)        | 23"                |
| Internal Depth Overall (in)        | 18 1/2"            |
| Internal Height Overall (in)       | 23"                |
| Number of Shelves                  | 2                  |
| <b>ELECTRICAL DATA</b>             |                    |
| Full Load Amperes                  | 2.0                |
| <b>REFRIGERATION DATA</b>          |                    |
| Horsepower                         | 1/6                |
| Capacity (BTU/Hr)                  | 1110               |
| Heat Rejection (BTU/Hr)            | 1665               |
| Charge (lbs/grams/ounces)          | 0.1323 / 60 / 2.12 |
| <b>SHIPPING DATA</b>               |                    |
| Gross Weight - Crated              | 184 lbs            |
| Height - Crated                    | 35"                |
| Width - Crated                     | 30"                |
| Depth - Crated                     | 32"                |

\*\*NOTE: Remote units are field wired and come with 6" legs.  
Refrigerant must be specified at time of order.

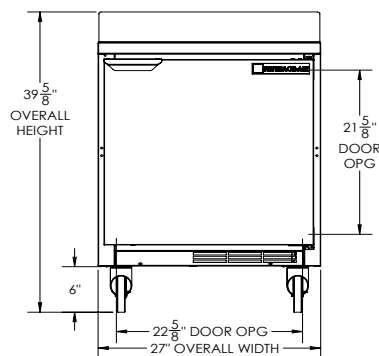
## Worktop Refrigerator Model: WTR27AHC

### Model Views

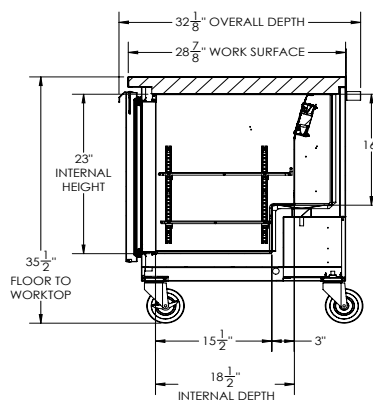
Required Clearance: 3" Bottom & 2" Rear



### PLAN VIEW



### ELEVATION VIEW



### SIDE VIEW



### ELECTRICAL CONNECTION



115/60/1  
NEMA 5-15P

Unit pre-wired at factory  
and include 8' long cord  
and plug set.

3779 Champion Blvd., Winston-Salem, NC 27105 1-888-845-9800 Fax: 1-336-245-6453 Beverage-Air.com Sales@bevaair.com

an Ali Group Company



The Spirit of Excellence